



### **Aakriti Constructions and Developers Pvt. Ltd.**

**Corp. Office** - 646A, 4th Floor, Sath Surya Square, Road No.36, Jubilee Hills, Hyderabad - 33

**Site Address** - Aakriti Miro, Nallagandla, Gachibowli, Telangana - 500019.

Ph.No.- 040-23606170/23600019, 9160477772/3

 [www.aakritihousing.com](http://www.aakritihousing.com)

 [sales@aaakritihousing.com](mailto:sales@aaakritihousing.com)



TSRERA No : P02400002324/2468/0131

  
**MIRO**  
LIFESTYLE ELEVATED

Note: This brochure is purely a conceptual presentation and not a legal offering.  
The company reserves the right to make changes in elevation, specifications and plans as deemed fit.

*Luxury Apartment For Exclusive Lifestyle*

PRESENTING

  
**MIRO**  
LIFESTYLE ELEVATED



*Nature's beauty is a gift that  
cultivates appreciation and  
gratitude*









## PROJECT AT A GLANCE

- 3+ Acres
- 4 Sky High Towers
- G+ 14 Floors
- 404 Luxury 2 & 3 BHK Apartments
- 2 BHK - 1214 sft to 1400 sft
- 3 BHK - 1539 sft to 2162 sft
- Lush Green Oxygen Spaces
- 70% Open Area
- 36000 sft Clubhouse
- 10 Mins Drive From Gachibowli





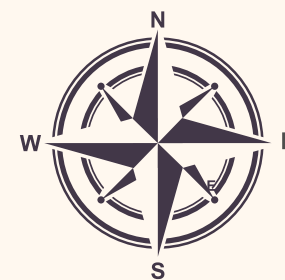
# PROJECT SITE PLAN



## Innate Elegance

### LEGEND

1. Toddler Tot-Lot
2. Sand Pit
3. Oxyzen Spaces
4. Temple
5. Kids Play Area
6. Amphitheatre
7. Lawn
8. Landscaped Gardens
9. Terrace Swimming Pool
10. Jogging Track
11. Tennis Court
12. Basket Ball Court
13. Cricket Nets
14. Open Air Gym
15. Senior Citizen Sitout
16. Transformer Yard







## 36000 SQ. FT CLUBHOUSE

- Entrance Lounge
- Squash Court
- Badminton Court
- Banquet Hall
- Dining
- Kitchen
- Administration Office
- Conference Hall
- Yoga / Meditation
- Children Activity Room
- Cards Room
- Multi Purpose Hall
- Grocery Store
- Gym
- Aerobics
- Day Care Centre
- Indoor Games
- Guest Room
- Spa / Saloon
- Terrace Swimming Pool





# A BLOCK

## GROUND & FIRST FLOOR PLAN





# A BLOCK

## TYPICAL FLOOR PLAN

Flat No 1  
West  
2036 Sft  
3 BHK

Flat No 9  
West  
1671 Sft  
3 BHK

Flat No 8  
West  
1669 Sft  
3 BHK

Flat No 7  
West  
1553 Sft  
3 BHK



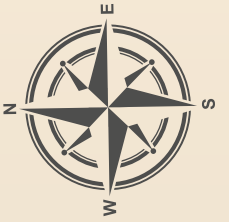
Flat No 2  
East  
1728 Sft  
3 BHK

Flat No 3  
East  
1373 Sft  
2 BHK

Flat No 4  
East  
1283 Sft  
2 BHK

Flat No 5  
East  
1214 Sft  
2 BHK

Flat No 6  
East  
1562 Sft  
3 BHK





# B BLOCK

## GROUND & FIRST FLOOR PLAN





# B BLOCK

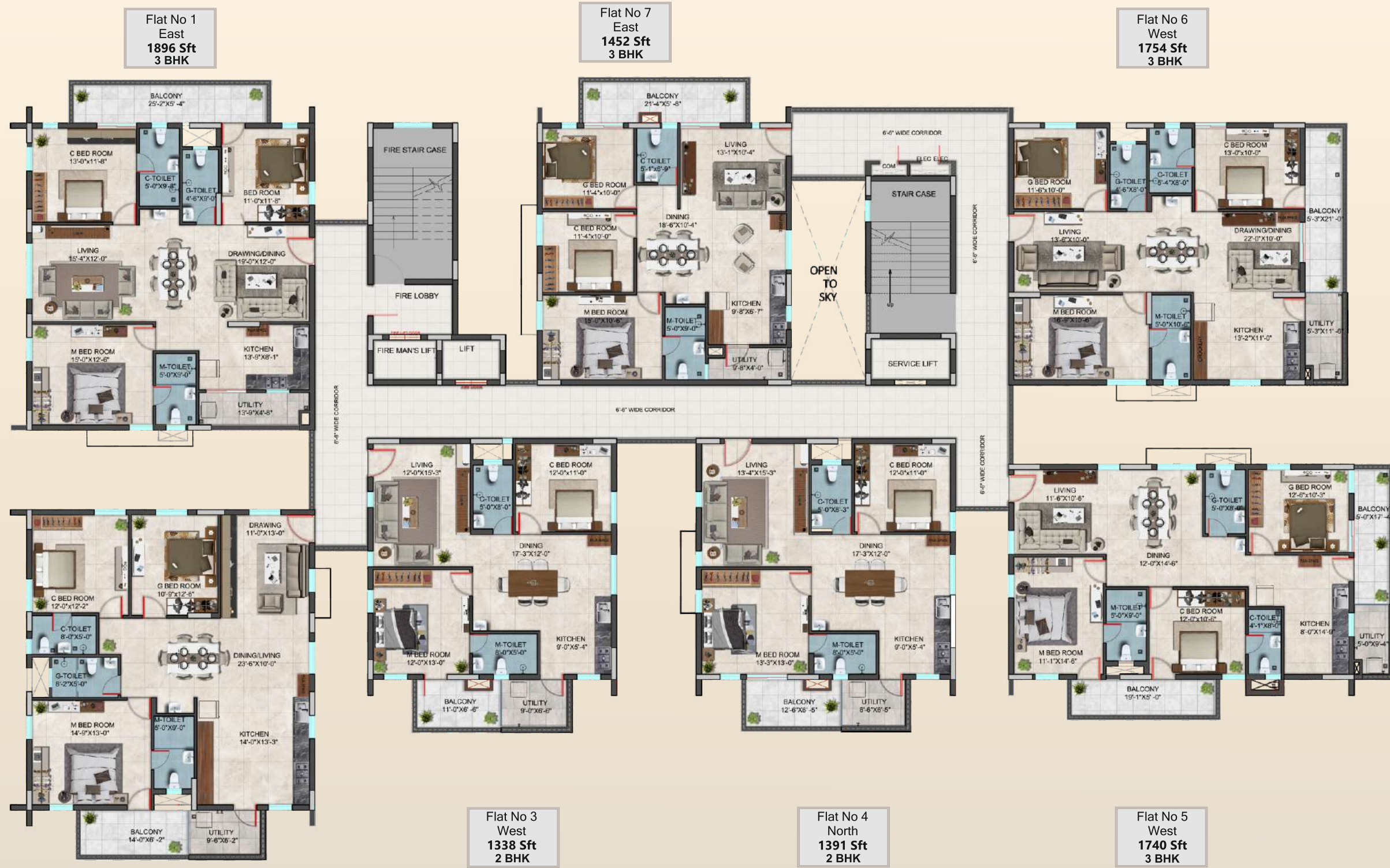
## TYPICAL FLOOR PLAN





# C BLOCK

## TYPICAL FLOOR PLAN



Flat No 1  
East  
1896 Sft  
3 BHK

Flat No 7  
East  
1452 Sft  
3 BHK

Flat No 6  
West  
1754 Sft  
3 BHK

Flat No 3  
West  
1338 Sft  
2 BHK

Flat No 4  
North  
1391 Sft  
2 BHK

Flat No 5  
West  
1740 Sft  
3 BHK

Flat No 2  
East  
1872 Sft  
3 BHK



# D BLOCK TYPICAL FLOOR PLAN



Flat No 2  
East  
1735 Sft  
3 BHK

Flat No 3  
West  
1935 Sft  
3 BHK



# SPECIFICATIONS

## STRUCTURE

### RCC Framed Structure

R.C.C. Shear Wall Framed Structure to with-stand Wind & Seismic Loads.  
Concrete Blocks for Non Structural Members (Wherever needed)  
Brick masonry with first-class AAC blocks in cement mortar.

## PAINTING

### External

Textured finish and Two Coats of Exterior Emulsion Paint of Reputed Make.

### Internal

Smooth putty finish with 2 Coats of Premium Acrylic Emulsion Paint of Reputed make over a Coat of Primer.

## DOORS, WINDOWS & RAILINGS

### Main Door

Manufactured Teak Veneered Door Frame & Shutter finished with Good quality Melamine Polish with Hardware of Reputed Make.

### Internal Doors

Manufactured Hard Wood Door Frame & Laminate Shutter with Hardware of Reputed Make.

### Utility Door

UPVC Door Frame of Reputed profile sections with combination of frosted Glass.

### French Doors

UPVC Door Frame of Reputed profile sections, with with provision for Mosquito Mesh.  
(Mesh & Fixing shall be at extra cost)

### Windows

UPVC Window of Reputed Profile Sections with Suitable Finishes as per Design with provision for Mosquito mesh for all windows.

### Balcony Railings

MS Railing in enamel paint finish of reputed make / Glass railing with S.S.

## BATHROOMS

Glazed Ceramic Tiles Dado upto 7 feet height of Reputed Make

### Utility

Glazed Ceramic Tiles Dado upto 3 feet height of Reputed Make.

## KITCHEN

### Water

Provision Separate Municipal Water provided by GHMC along with Borewell water.

### Utility

Provision for Washing Machine / Dishwasher & Wet Area for Vessel Washing etc.

## TELECOMMUNICATIONS, CABLE TV & INTERNET

### Intercom facility

Intercom facility to all the units connecting Security

### Cable TV

Provision for Cable Connection in all Bed Room & Living Room

### Internet

One Internet connection Provision to Living Room & Master Bed Room

## LIFTS

High speed automatic passenger Lifts with rescue device with V3F for energy efficiency of reputed make for each tower

## ELECTRICAL SYSTEM

Concealed copper made wiring (FRLS Grade) in conduits for Lights, Fans and Power plug points.

Powerpoint provision for the Air-Conditioner (A.C) in all bedrooms.

Powerpopint provision for Geysers in all Bathrooms.

Powerpoint provision for Cooking range, Refrigerator, Micro Ovens, Mixer & Grinder in Kitchen.

Powerpoint provision for Television and Audio Systems.

Miniature circuit breakers (MCB) boards and Switches, Fincab, Anchor, HPL.

L&T, Polycab or equivalent make.

3 Phase supply for unit and individual meter boards.

100% power backup in common areas.

100% power backup for flats.

## FACILITIES FOR DIFFERENTLY ABLED

Access ramps at all Block Entrances shall be provided for Differently Abled persons.

## POWER BACK UP

100% DG Set backup with acoustic enclosure & A.M.F

## SECURITY / BMS

Sophisticated round-the-clock security / Surveillance System.

Surveillance cameras at the main security and entrance of each block to monitor.

Panic button and intercom is provided in the lifts connected to the security room

Solar power fencing around the compound.

## CENTRALIZED BILLING

Billing shall be done for Consumption of Electricity, and power backup

## FIRE & SAFETY

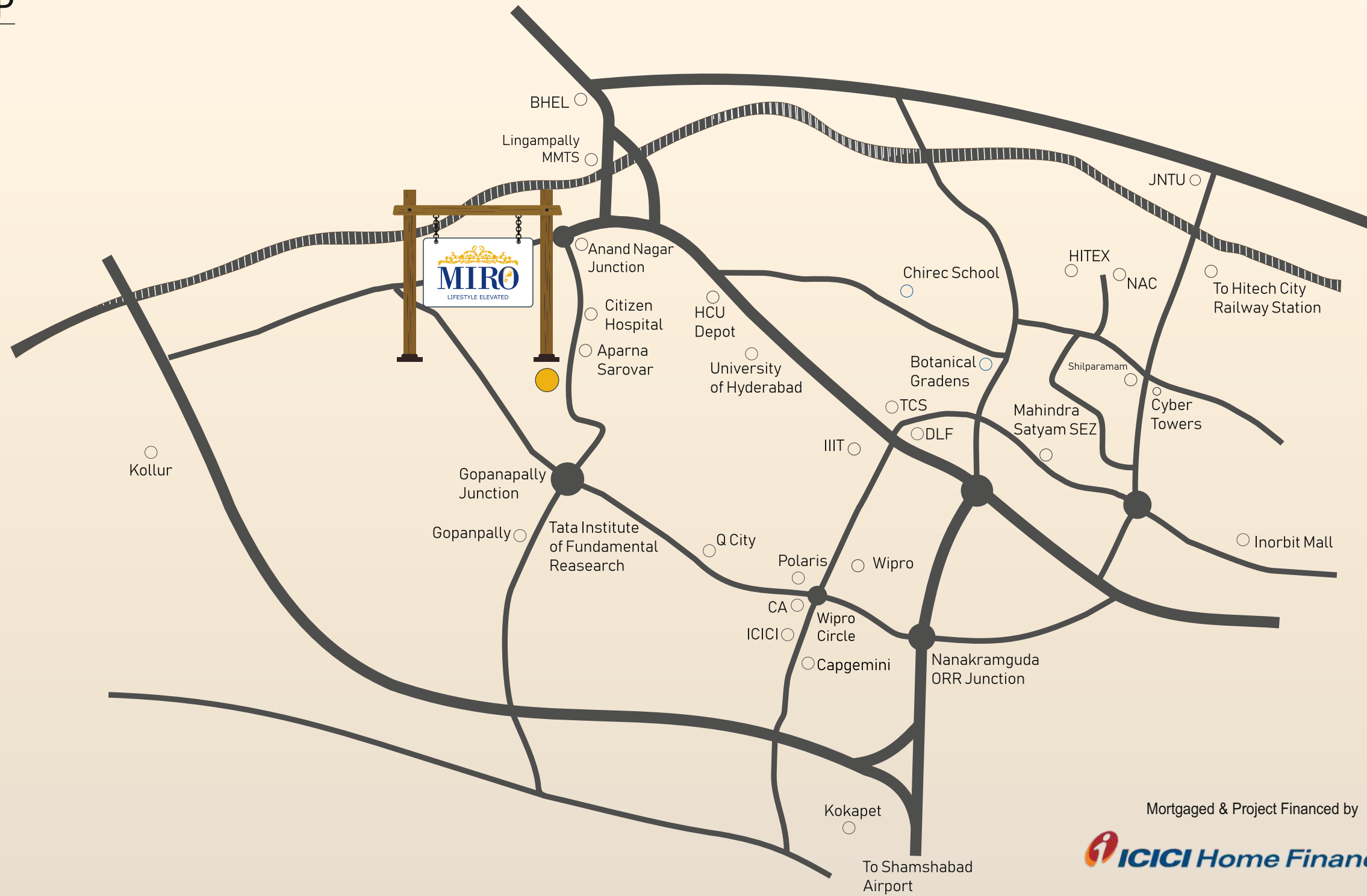
Fire hydrant fire sprinkler system in all floors and basements as per NBC Norms.

Fire alarm in all floors and parking areas (basements) as per NBC Norms.

Control panel will be kept at main security.



# ROUTE MAP



Mortgaged & Project Financed by

Project Approved by

**CONNECTIVITY**  
 Wipro Circle, Gachibowli.  
 Nehru Outer Ring Road  
 Lingampally Railway station  
 Citizen Hospital, Nallagandla  
 H.C.U & Gachibowli Stadium.

**COMMERCIAL & IT HUB**  
 Hi-Tech City  
 Gachibowli  
 Financial District

**EDUCATIONAL INSTITUTES**  
 IIIT Hyderabad  
 Indian Immunological Limited  
 Kendriya Vidyalaya  
 Dr. Y.S.R. National Institute of  
 Tourism & Hospitality Management  
 Maulana Azad National Urdu University

## Home Loans